

Cejilla en 1°

c5--      c2---

Mi ————— c5--      c2---  
Si ————— 7 4 5 5 x-5 2 3↓-2 5 4 7-4 4~2 2-1  
Sol ————— 6 6 6 x-6 2 2 2-1  
Re ————— 6 6 x-7 2  
La ————— 4 x-7  
Mi ————— x-5

p+m      m      i      p      i      m      i      .      .      .      .      .

c5--

————— c5--  
————— x  
————— 7 4 5 5 x-5 2~5-4-4~2-2-5-2~1  
6 6 6 x-6 1-2-1-2 2 2-1  
6 x-7  
4 x-7  
x-5

p+m      m      i      p      m      i      m      i      .      .      .      .

————— 9 9 10 7 9 7 9 5 5 4 4  
7 7 7 8 8 9 9 6 5  
7  
5 9 11

p+m      m      i      p      i      p      i      .      m      .

½c2----- ½c1-----

————— 7-7-7-5-4-4 2-4-2-2  
————— 6 2 2 6-5-2 1-2-1 1↑↓  
————— 2 2 2 2 1 1  
————— 0 0 3 3  
————— 4 4

m      i      m      i      .      .      .      ip

c5--      c2---

————— c5--      c2---  
————— 7 4 5 5 x-5 2 3↓-2 5 4 7-4 4~2 2-1  
6 6 6 x-6 2 2 2-1  
6 x-7 2  
4 x-7  
x-5

p+m      m      i      p      i      m      i      .      .      .      .

c5--

x

7 4 5 5 x 5 2~5 4 4~2 2 5 2~1  
 6 6 6 x 6 1 2 1 2 2 2 1  
 6 6 x 7  
 4 x 7  
 x 5

p+m m i p m i m i . . . .

c5

5↑↓

9 9 10 7 9 7 9 8 8 9 9  
 7 7 7 8 8 9 9  
 7 7  
 5 9 11 7

p+m m i p i p i . m . ip

4 9 8 9 7 9  
 4 5 7 5 10 10 9 7 10 9 10 9 7 9 7  
 6 9

m i m i . . . . . . . . . . . .

c4-----½c4-----½c2-----½c1-----½c2-----

5 4 5 7 5 4 5 4 4~2 4 2 2~1  
 4 4 4~2 2 2~1 1 2 4 1~2 2↓↑↑-↓↑↑-↓  
 4 4 4~2 2 2~1 1 1~2 2  
 6 4  
 5 5

pai pai p

[TEMA] ½c4-----

0↑↓ 0↑↓ 0↑↓ 0↑↓ 0↑↓ 0↑↓

7 5 5 4 0 7 5 5 4 0 4 4 4 4 4 4 4 4↑↓  
 6 6 6 6 6 6 6 4 8 4 8 6 4 6 4 4 4 8 4 8 6 4 6 4 4 4  
 6 6 6 6 6 6 6 4 8 4 8 6 4 6 4 4 4 8 4 8 6 4 6 4 4 4  
 -4 4 0  
 5

p. . . . . . . .

½c4-----

0↑↓ 0↑↓ 0↑↓ 0↑↓ 0↑↓ 0↑↓

7 5 5 4 0 7 5 5 4 0 4 4 4 4 4 4 4 4↑↓  
 6 6 6 6 6 6 6 4 8 4 8 6 4 6 4 4 4 8 4 8 6 4 6 4 4 4  
 6 6 6 6 6 6 6 4 8 4 8 6 4 6 4 4 4 8 4 8 6 4 6 4 4 4  
 -4 4 0  
 5

p. . . . . . . .

1/2c4----- c4

p. . . . .

1/2c4-----

p. . . . .

1/2c4-----

p. . . . .

1/2c4----- c4

p. . . . .

1/2c2-----

i m a m i m i m . . . . i m i m i m . . . . .

1/2c5-----

. . . . .

c2----

3 5 4 5 7 5  
 2 3 6~8 8 6 4 6 6 4 8 4 2 1 2 1 2~6 6 4  
 4 4 6  
 2 2 4

m . . p i m a m i m i m . . .

1/2c2-----

2 2 2 4 6 6 6 4 2 2 4 6 4 5 5 4 7 5 5 7 4 4  
 6 6

m i m i m . . . . .

8 6 5 9 5 5~4 6 6 4 4 8 4 4~2 4 5 5 5 4 6 5 5 6 4  
 7

m i m i

1/2c4

5 7~9 9 7 7 9 10 7 9 10 9 10 7 9 7 9 8 9 6 6 8 8 6 4 4 7 6  
 9 (4)  
 (6)  
 7

m i m i m . . . . . p+a m

1/2c2

c4-----

c2----

4 5 4 4 4 2  
 5 5 7 2↑ 5 7 5 4 3 5 3 2 0  
 4 6 7 6 4 6~4 2 2 6 6 6 2  
 2 4 4 2  
 5

m i m i . . . . . i p m .

1/2c4 1/2c2

0 0 2 4 5 4 2 0 4 4↑ 2↑  
 2 2 3 0 0 2 4 4 2  
 1 2 4 2 [TEMA]  
 2 4 2  
 0 6 4  
 7 5

m i . . . . . i i

**A**  $\frac{1}{2}c2$ -----

2↑↓ 2↑↓ 2↑↓ 2↑↓ 2↑↓ 2↑↓ 4↑↓ 4↑↓  
 2 2 2 2 2 2 4 4  
 2 2 2 2 2 2 4 4  
 0 4 4 4 2-4-2-2 0 4 4 4 2-4-2 2 2-4  
 p. . . p. . . p. . .

$\frac{1}{2}c2$ -----  
 (0)

2↑↓ 2↑↓ 2↑↓ 2↑↓ 2↑↓ 2↑↓  
 2 2 2 2 2 2  
 2 2 2 2 2 2  
 0 4 4 4 2-4-2-2 0 4 4  
 m i m i . . . p. . . p. . .

c4 **B**

8-9-11-9-8  
 7-9-10  
 4-6-8 9-6-5 5↑ (A-B)  
 4-6-7 7-6-6  
 4 4 6  
 4  
 m i m i m . . . . . i

$\frac{1}{2}c2$ -----

2 0-2-2-4-4-2-0  
 8-8-8-9 6 6-10-6~1 2 2 1-2-4 4  
 6 4 4  
 i m i m .

$\frac{1}{2}c1$

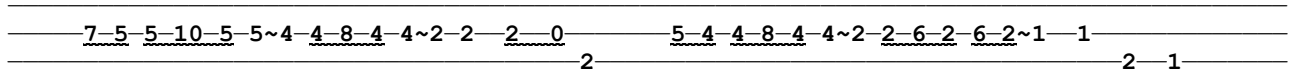
7-5-5-10-5 5~4 4-8-4-4~2-2 2-0 5-4-4-8-4 4~2-2-6-2-6-2~1-1  
 2 2-1-1  
 1  
 0  
 4  
 m i m i m i m m m i m i m i m m

$\frac{1}{2}c2$ -----

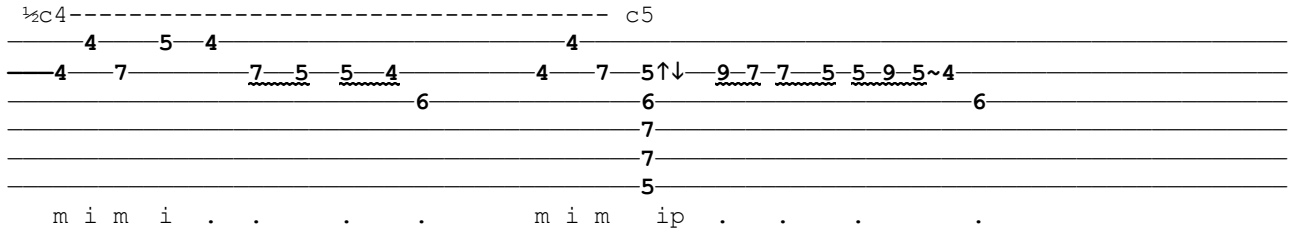
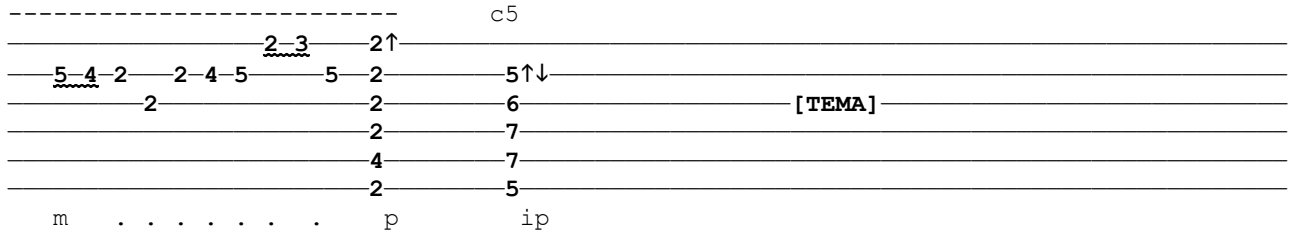
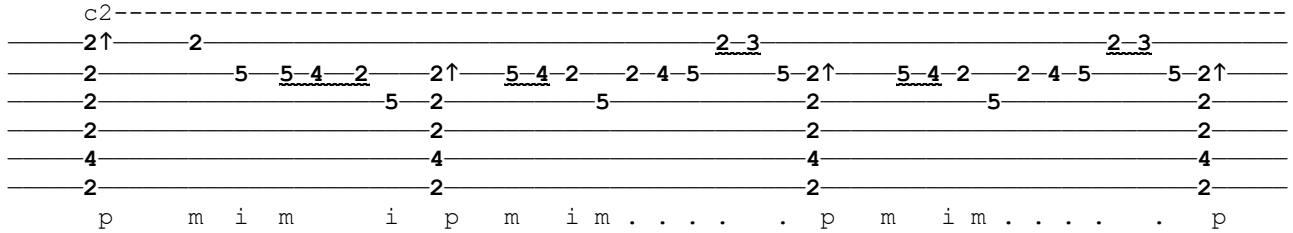
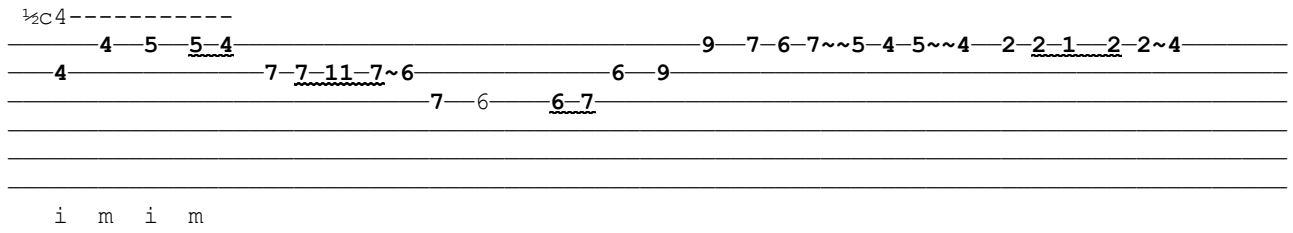
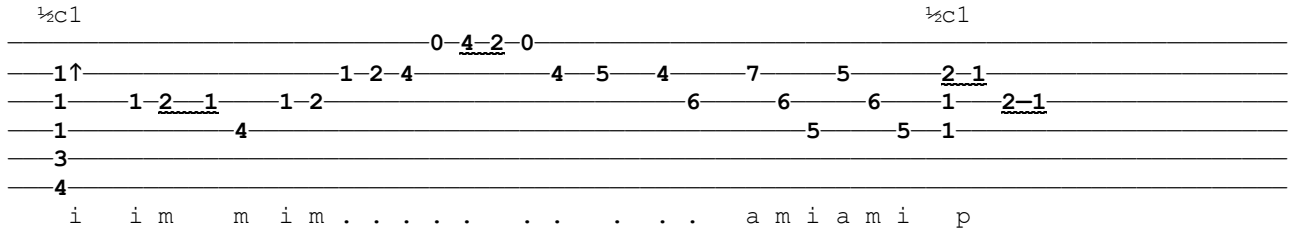
2 0-2-2-4-4-2-0  
 8-8-8-9 6 6-10-6~1 2 2 1-2-4 4  
 6 4 4  
 i m i m .

ai nai nai nai nai nai na-a-a-i

ay nai nai nai nai nai na-a-a-a-i



m i m i m i m m m i m i m i m m



9 7 10 9 7 9 11 14~12 12~11 11-12 11  
 9 9 10 9 7 10 12 10 10 14-12  
 10 11 9 9  
 9

i m . p i m i . p p m i m

9-11 9-11 9~8 8-9 8-9 8 1/2c4----- 4 5 4  
 12-10 10-9 4 7 7-5 5-4  
 6

1/2c4--- c5  
 4 5↑ 10 9 11 14 12  
 4 7 5 4 5 7 5 4 5 9 12-10 10-9 10 12 10  
 6 (6) 10 11 11 9  
 7 9  
 7  
 5

m i m i p i m i m . . . p p

11-12-11 9-12-9 9-12-9 9 8-12-8 8-12-8 8 c4  
 14-12 12-10 (9) 4↑↓  
 4  
 5  
 6  
 6  
 4

m i . . . . . ip

c2 c5-- c8--  
 (2) 2↑ 5↑ 8↑  
 (5) 2 2 6 9 [TEMA]  
 6 5 4 3 2 2 7 10  
 4 3 2 1 0 4 7 10  
 5p-4-3-2 2 5-5 8-8  
 p . . . . . i p i p i